



*EVENTS
AT
ABBEY BEACH RESORT*



595 Bussell Highway PO Box 762 Busselton WA 6280
Tel +61 8 9755 4600 Fax +61 9755 4610
functions2@abbeybeach.com.au www.abbeybeach.com.au



ABBEY BEACH RESORT
BUSSELTON

Index

1. Introduction
2. Resort Information
3. Resort Facilities
4. Accommodation
5. Conference and Function Facilities
6. Function Room Floor Plans
7. Conference Menu Options
 - Breakfast
 - Refreshments
 - Lunch
 - Dinner
8. Beverage Package
9. Outsourced Hire Equipment
10. Preferred Suppliers
11. Margaret River Region
12. How to Find Us and Contact Details



Abbey Beach Resort

Resort Information

Abbey Beach Resort is conveniently located on the beachfront of the tranquil waters of Geopraphe Bay amidst landscaped gardens and serene lakes, only 2½ hours from Perth. Abbey Beach Resort is a leisure resort with countless facilities and amenities for your pleasure.



Play tennis or squash, use the barbecues, children's playground, gymnasium and sauna, external pools, heated indoor pool and spa, and enjoy a coffee, snack or beverage from the extensive selection at the café, leisure bar or lounge bar.

There are many ways to spend free time, stroll along the endless beaches, try your hand at crabbing or fishing, hoist a sail, tackle the surf or paddle a wave ski. Tour the wineries, restaurants, art galleries, museums, forests, caves and watch the whales.

The Resort comprises of Hotel and Apartments. Select from 1, 2 and 3 bedroom fully serviced apartments with full kitchens and studio units with kitchenettes, most of which have a private balcony and private double spa. You are assured of comfort and style at Abbey Beach Resort.

Resort Facilities

Abbey Beach provides a complete range of guest facilities which include:

- Ample Parking
- Atrium Brasserie open in the evening for a tantalizing dinner
- Reflections Cafe open for breakfast through to the evening
- John Abbey Sports Bar and Atrium Lounge Bar
- 25 meter indoor heated pool and indoor spa
- Two outdoor swimming pools
- Two full size and two half - court tennis courts
- Sauna gymnasium and squash court
- Outdoor undercover barbecues
- Children's playground
- Wave skis
- Adult mountain bikes available for hire
- Video hire and FOXTEL
- Wireless internet connection and business centre



Accommodation

Studio Spa Suite

Studios feature a fresh new look with reverse cycle air-conditioning, private double spa, marble tiled bathroom, kitchenette private living sized balcony, stereo and CD player, LCD television, FOXTEL and DVD player, some with views over the atrium of the hotel, swimming pool or gardens.

1, 2 or 3 Bedroom Apartments

Each 1, 2 and 3 bedroom apartment features reverse cycle air-conditioning, private double spa, marble tiled bathrooms, fully self contained kitchen, private living sized balcony, LCD television, FOXTEL and DVD player and most have views over either the lake, ocean, pool, gardens, tennis courts, or children's playground. 2 and 3 bedroom apartments include private laundry facilities



Beachfront Apartments

Each 2 bedroom beachfront apartment is more spacious than the other apartments and enjoys a northerly outlook over the Indian Ocean - that is rather unique in Western Australia. Relax on your own private balcony and watch the sunrise in the East or set in the West.

Corporate Rates

Sunday- Thursday Corporate rate per studio spa suite per night for 1 or 2 people on sighting a business card on check-in.



Conference and Function Facilities

Abbey Beach Resort is the largest and most popular conference and event venue in the South West.

A dedicated Functions co-ordinator is available to provide assistance and guidance each step of the way, no matter how small or large your function. Our event facilities include:

- Up to 10 different rooms including a ballroom, meeting rooms, conference rooms and boardrooms are available.
- An additional 750 metres of Atrium space for coffee breaks and meals and gala events
- Seminar packages available for conferences, workshops and seminars
- Specialised banqueting arrangements to accommodate your function needs
- Equipment available for hire and we can arrange delivery of any further equipment you may require.
- Use of the unique location and range of resort facilities to make your event perfect.

	Area M ²	Boardroom or U-Shape	Theatre	Banquet	Cocktail	Class Room
Abbey Ballroom	335	100	320	230	320	188
Abbey Ballroom A	205	40	200	130	200	112
Abbey Ballroom B	130	35	110	70	100	60
Abbey - 2	55	16	40	30	40	18
Abbey - 4	145	40	110	70	120	54
Abbey - 4A	70	16	50	30	60	18
Abbey - 4B	70	16	50	30	60	18
Abbey - 5	125	40	110	70	120	54
Abbey - 5A	50	16	50	30	60	18
Abbey - 5B	70	16	50	30	60	18
Board Room 1	35	22	---	---	---	---
Board Room 2	25	12	---	---	---	---



Venue hire includes pads,
pens,
iced water and mints

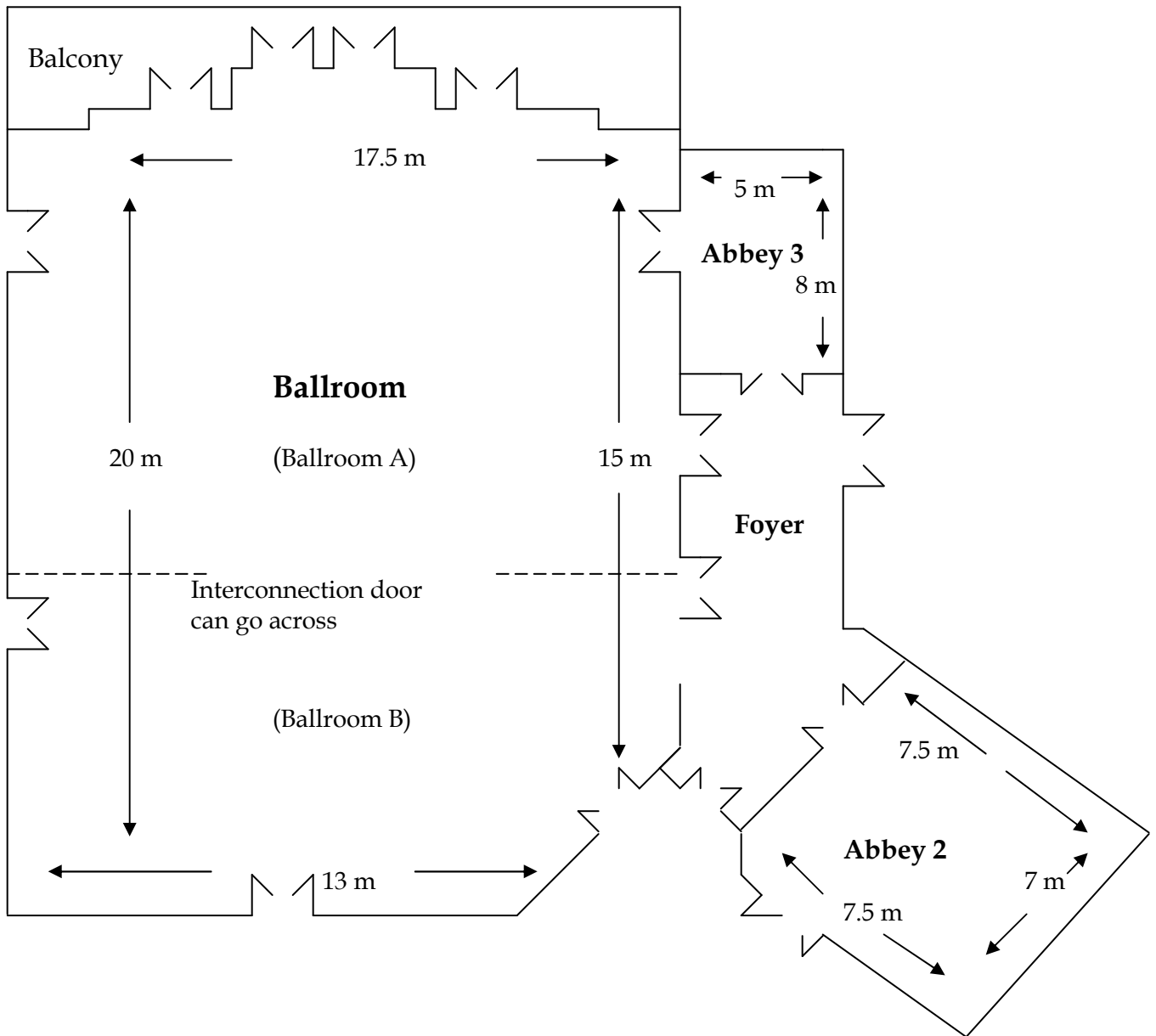
All numbers are maximum
capacities

Does not allow for staging,
dance floor or head table

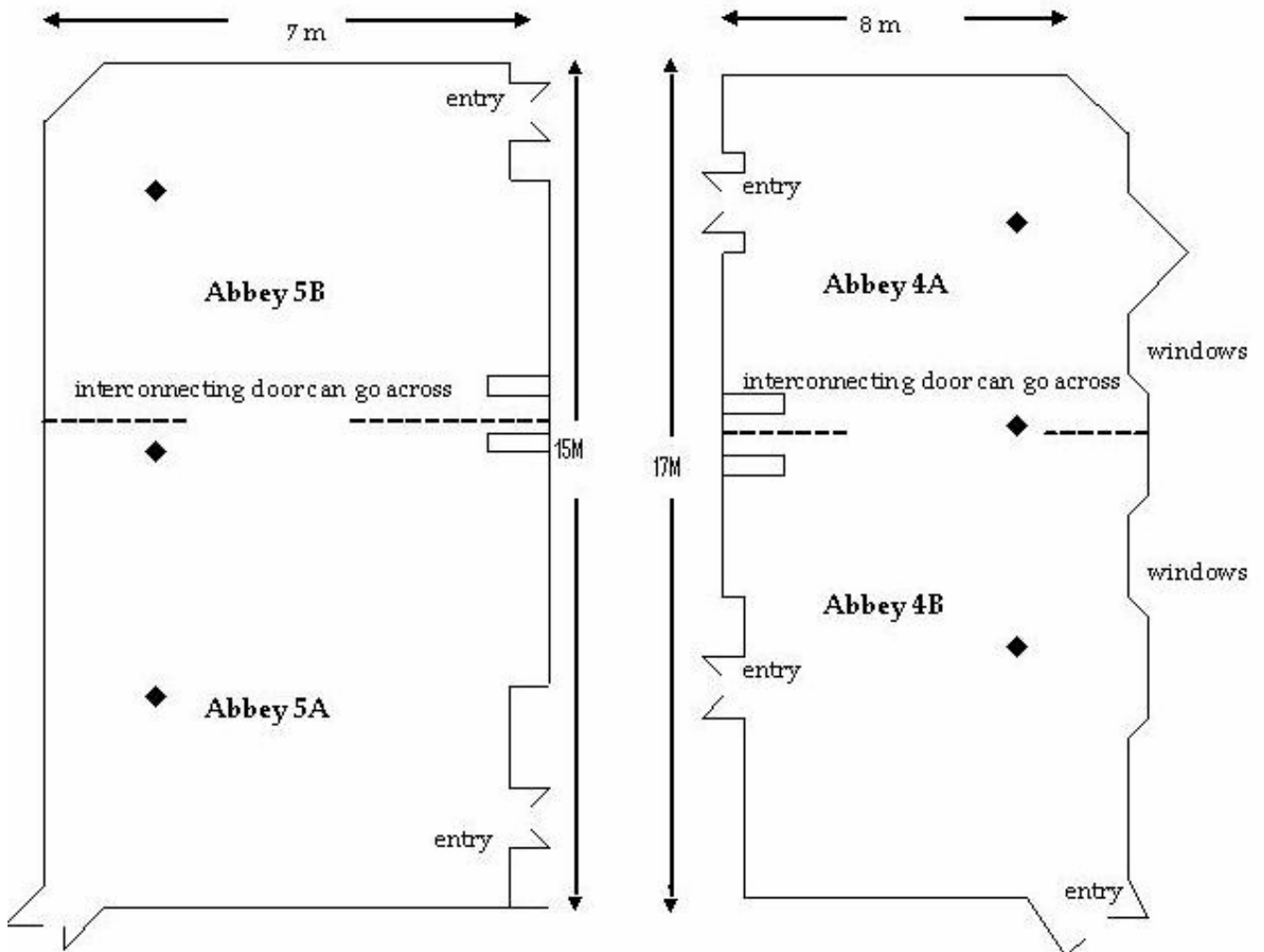


Function Room Floor Plans

Ballroom



Function Rooms Abbey 4 and Abbey 5



Private Breakfast Options

Venue hire on application

Reduced rates available for inclusion with group accommodation payment

Continental Buffet

Full Hot Breakfast and Continental Buffet

Served Plated Hot Breakfast

Includes continental selections on the table with hot plated breakfast served

Refreshments

Prices are per person per refreshment break required:

Freshly brewed coffee, tea and orange juice

Assorted home baked cookies

Assorted cake selection

Assorted sweet &/or savoury muffins

Scones with jam and cream

Sweet Danish pastries

Selection of finger sandwiches

Hedgehog slice

Lamington and cream

Hot savoury selection platter (mini pies, sausage rolls & quiches)

Selection of sliced fruits in season

selection of fruit juices - additional charge

continuous tea and coffee in meeting room

half day

full day



Lunch Options

Light Lunch

- Club sandwich, assorted rolls or wraps selection platter
- Assorted hot savoury platter selection
- Fresh sliced fruit and assorted cheese & crackers platter
- Tea, coffee, orange juice and post mix soft drink

Working Lunch

- Fresh bread roll basket
- Selection of hot and cold platters and two salads
- Fresh fruit sliced platter and assorted cheese & crackers platter
- Tea, coffee, orange juice and post mix soft drink

Buffet Lunch

Extensive buffet lunch - price on asking

Choose your own selections from assorted hot and cold platters, salads, cheese and crackers and dessert options. Menu available on request.

Tea, coffee, orange juice and post mix soft drink included in overall price



Dinner Menus

Pre Dinner Canapés or Cocktail Event

Sample menus can be provided

Set Menu

One entrée choice	Two entrée choices	Two entrée choices	Two entrée choices
Two main choices	Two main choices	Three main choices	Two main choices
One dessert choice	Two dessert choices	Two dessert choices	Two dessert choices
Tea and coffee	Tea and coffee	Tea and coffee	Tea and coffee

Buffet Menu

One cold selection	Two cold selections	Four cold selections
Three salad selections	Four salad selections	Six salad selections
One carvery item	Two carvery items	Three carvery items
Three hot selections	Four hot selections	Six hot selections
Three dessert selections	Four dessert selections	Six dessert selections
Tea and coffee	Tea and coffee	Tea and coffee

- Menus include fresh bread rolls baked on the day in our kitchen
- Chocolates or petite fours served alongside tea and coffee
- Sample menus can be provided.
- Menus for guests with dietary requirements can be discussed and pre arranged

Beverage Package

Our beverage package consists of premium and light tap beer, Margaret River wine, Sparkling Cuvee Brut champagne and post mix soft drinks.

- 1 Hour
- 2 Hours
- 3 Hours
- 4 Hours
- 5.5 Hours

Please note our package wine is subject to change and notification will be given to you well in advance of your event date. When planning event start time please note the close time in our function rooms is 12.00am.



Outsourced Hire Equipment

The following equipment is available for outside hire at a special reduced rate for Abbey Beach Resort events. Prices are available on request.

- Portable mipro unit with hand held microphone with stand
- Stages, steps and spotlighting
- Lectern/podium for speeches
- Video camera
- CD/cassette player
- Lapel microphone
- VHS/DVD & TV monitor and stand
- Data projector for any power point presentation
- Dance floors:
Hired from Busselton Party Hire costs include delivery, installation GST & state hire tax
5m x 5m approx 100 guests Oak Parquetry
6m x 6m approx 200 guests Oak Parquetry

Other size floors can be organised with price on application. Please note there is a 30-day cancellation fee prior to event booking date.



Abbey Beach Preferred Suppliers

Team Building Suppliers On/Offsite

Travel Management Group	John Bradbury	08 9758 7089	1300 765 518	admin@travelmanagementgroup.com.au
Merribrook Corporate Outdoors	Suzanne Clarke	0425 609 766	08 9755 5599	
XL Events	John Chichkan	0407 069 944	1300 733 385	
Corporate Challenge	Alex Badenoch	08 9379 1222		

Audio Equipment

Totally Sound	Derek Paterson	0419 940 810	08 9725 4599	www.totallysound.com
---------------	----------------	--------------	--------------	----------------------

Event Decorators, Flowers and Accessory Hire

Vicky Brown	WEZ Enterprises	0438 523 752	08 9752 3752	www.wezenterprises.com.au
Neil and Adele	Creations Unlimited	0417 176 106	08 9721 8439	www.creationsunlimited.com.au

Entertainment

Darren Gittos	DJ, MC & Karaoke	0437 050 355		darren@djdarren.com.au
Nathan Wheals	DJ & MC	0413055787		austereo@hotmail.com
Simon Healy	DJ& MC	0409 688 758	08 9795 6320	
Paul McDaniel	Live Band & DJ	0408 788 835	08 9755 3771	paul@southwestlightandsound.com.au
John Terrace	Top Shelf Live Band & DJ	0418 931 903		john@gateway.net.au

Photographers

Pixel Magix		08 9721 6444	0427 773503	www.pixelmagix.com.au
Clare Day Photographic Design		0418 941 474	08 97611466	www.clareday.com.au
Tribbeck Media	Steve Tribbeck	0418 951 913		www.tribbeckmedia.com.au
Lloyd-Smith Photography	Steve & Steph Lloyd-Smith	08 9724 1999		

Videographers

Supernova Mark Whittle		0407 422 399	08 9725 1818	www.supernova.net.au
Video Concepts		0431 175 554	08 9316 2260	www.videoconcepts.com.au

Coach Transfer

Gannaways Charters		08 9752 3036		
--------------------	--	--------------	--	--

Childcare and Babysitters

Down South Babysitting Services	Trish	08 9754 1976	0438 813 440	
---------------------------------	-------	--------------	--------------	--

The South West

Busselton and Dunsborough

Explore Busselton itself with all the shops and cafes you could want. Take a walk on the Southern Hemisphere's longest wooden jetty or along the bay. Experience Cape Naturaliste Lighthouse and Discovery Centre, visit Dunsborough and stop at the bakery.



Take a walk through Nilgi Cave in Yallingup and see the wonderful stalagmites and stalagmites. Visit the fabulous Yallingup Shearing Shed or for the more adventurous, book a dive or snorkel on the wreck of the HMAS Swan. A visit to the region would not be complete without exploring and tasting the wines from premium producers and at your favourite, indulge in a vineyard lunch overlooking continuous rows of vines.



Meander through countless country lanes discovering galleries, taste boutique beers, local cheeses, and chocolates



and more. Head back to the resort, and to the beach to watch the sun set over the Indian Ocean. Whale watching with Naturaliste Charters - Dunsborough (September - November) and Augusta (June - end August) is a great way to see the big mammals up close.

The South West of Western Australia features beautifully designed golf courses that provide a challenge for any level of golfer. Choose from a number of courses or play them all, indulge yourself on and off the course.

Margaret River

Drive the length of Caves Rd and discover vineyards, galleries, forests caves and more. Visit the Cape Leeuwin Lighthouse and see where the Indian Ocean meets the Southern Ocean. There is always the chance to spot whales from the shore near the lighthouse from June - November. For a taste of the coast, deviate from the road and discover tranquil private swimming bays, long sandy beaches or powerful world class surf. Visit the Margaret River township, stroll the main street, explore the many boutique shops and enjoy a coffee in one of the many cafes.



How to Find Us

Abbey Beach Resort is just 50 minutes by air or 2 1/2 hours drive south of Perth in Western Australia.

Its northern aspect on Geographe Bay is perfect, and the resort sits at the gateway to the famous Margaret River wine region with most attractions within an hour's drive of the resort.

The region features a stunning coastline, dive wrecks, wineries, walking trails, golf courses, seasonal whale watching and wildflowers. Everywhere you go in this region you will find wineries, galleries, and fine restaurants. It has quickly become one of Australia's most sort after destinations.



Contact Us

Street Address	595 Bussell Highway Busselton WA 6280
Postal Address	PO Box 762 Busselton WA 6280
Toll Free Telephone	1800 017 097
Telephone	+61 8 9755 4600
Fax	+61 8 9755 4610
Email	functions2@abbeybeach.com.au

595 Bussell Highway PO Box 762 Busselton WA 6280
Tel +61 8 9755 4600 Fax +61 9755 4610
functions2@abbeybeach.com.au www.abbeybeach.com.au